







## FEATURES

Separate Living and Private Areas

Huge Master Bedroom with His and Her WIR

Open family, dining and Alfresco

Guest Bedroom near Bathroom

 5 | 
  3 | 
  3 | 
  2

With your lifestyle in mind, we design your house to make use of as many natural elements as possible. With panoramic windows to each room, you will have plenty of natural light and cross ventilation. A Colorbond rainwater tank and the option of installing solar panels we will ensure you will be saving your money and the environment. All our houses go through compulsory BASIX checks to make sure your home remains both economical and ecological.

# HONEYSUCKLE



5



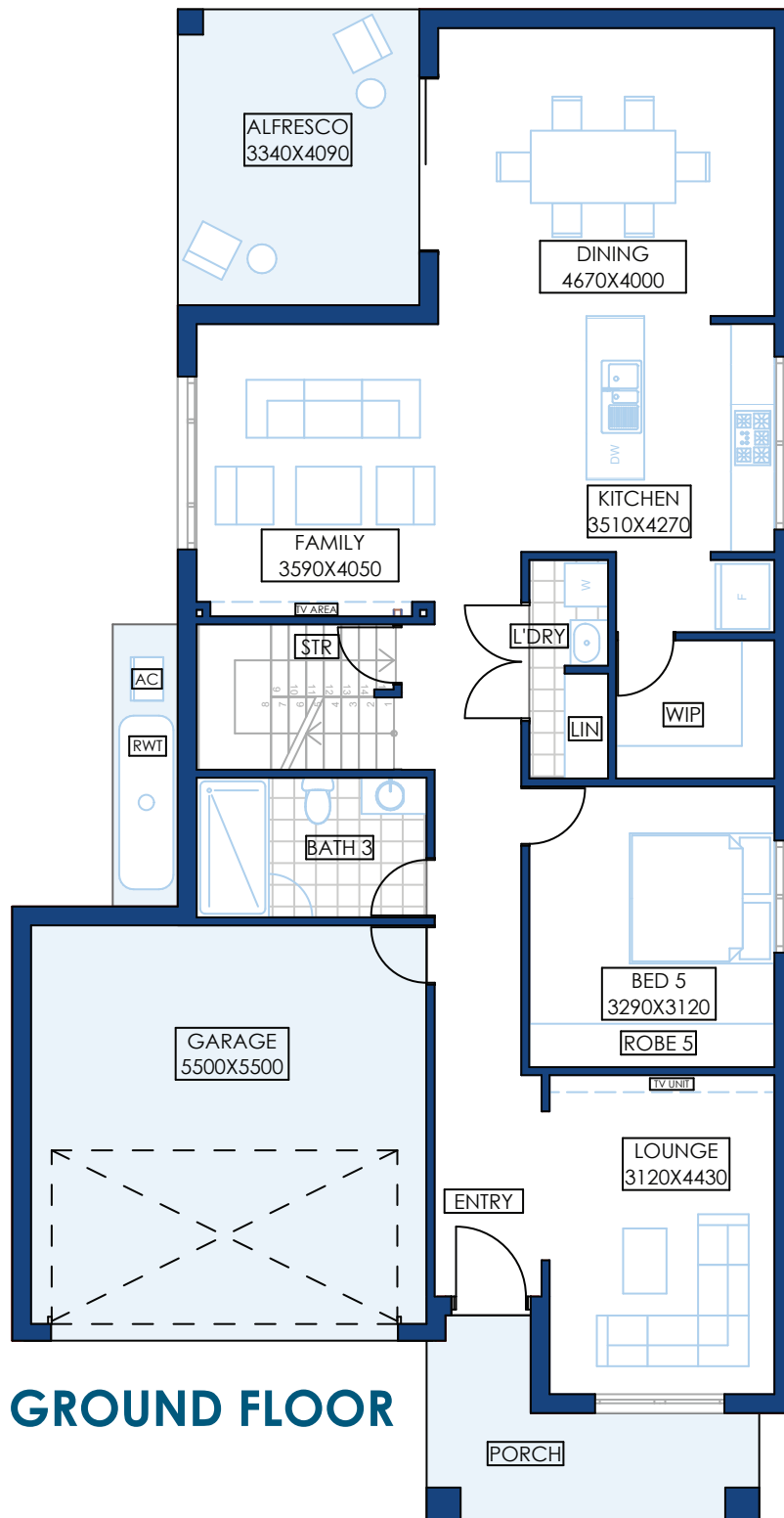
3



3

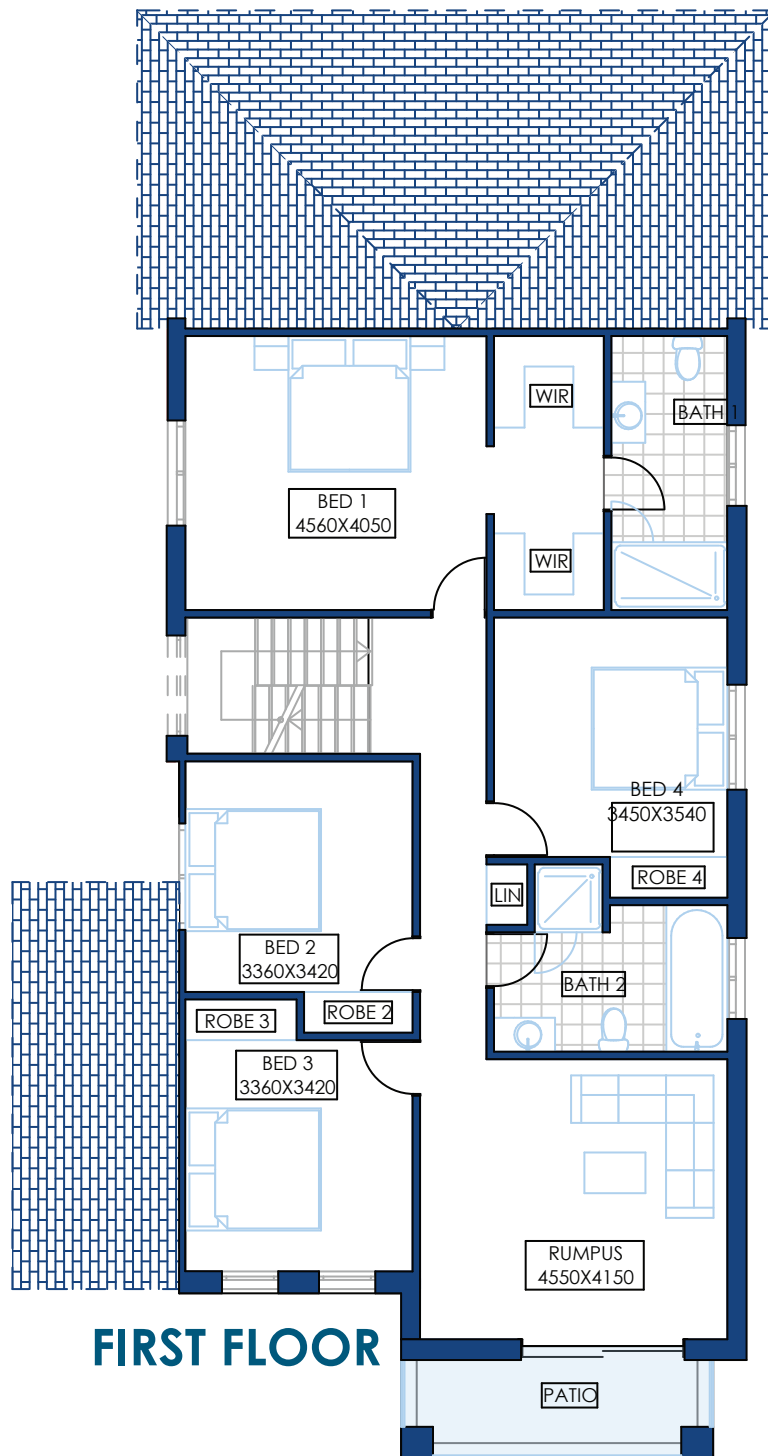


2



**GROUND FLOOR**

Suited to wider lots, Honeysuckle is the perfect double storey house for entertainers. With three living areas and a fantastic outdoor entertainment area, you can be sure that your parties will be the talk of the town. Offering a guest bedroom and a full sized bathroom downstairs, privacy is at its peak.



## FIRST FLOOR

With 4 large bedrooms upstairs, this home will ensure your privacy remains intact, even when you have some-one staying the night.

The master suite gives you a his-and-her WIR and an attached ensuite, where the other rooms have a main bathroom to give full access to everyone. It even has a full balcony off the rumpus upstairs.

Honeysuckle is definitely an entertainer's dream home, a great entertainment space, total privacy, and plenty of storage to go around.

## HONEYSUCKLE 34

Ground floor	126.38 sqm
First floor	125.00 sqm
Porch	8.75 sqm
Alfresco	13.66 sqm
Garage	33.50 sqm
Patio	6.69 sqm

# Honey Suckle



**ARTECH**  
HOMES  
BUILDING A BETTER LIFE

---

**P** 02 9161 1010 | **E** [info@artechhomes.com.au](mailto:info@artechhomes.com.au) | **A** 7 Huntmore Rd Minto NSW 2566 | **W** [artechhomes.com.au](http://artechhomes.com.au)

ARTECH HOMES | A DIVISION OF MAJOR PROPERTY DEVELOPERS PTY LTD. | ABN: 90 601 427 141 | BUILDER LICENCE NO: 276490C