



FEATURES

Large Centralised Master Bedroom
Lots of storage in the WIP
Private Bedrooms
Separate Formal Lounge

4 | 2 | 2 | 2

With your lifestyle in mind, we design your house to make use of as many natural elements as possible. With panoramic windows to each room, you will have plenty of natural light and cross ventilation. A Colorbond rainwater tank and the option of installing solar panels we will ensure you will be saving your money and the environment. All our houses go through compulsory BASIX checks to make sure your home remains both economical and ecological.

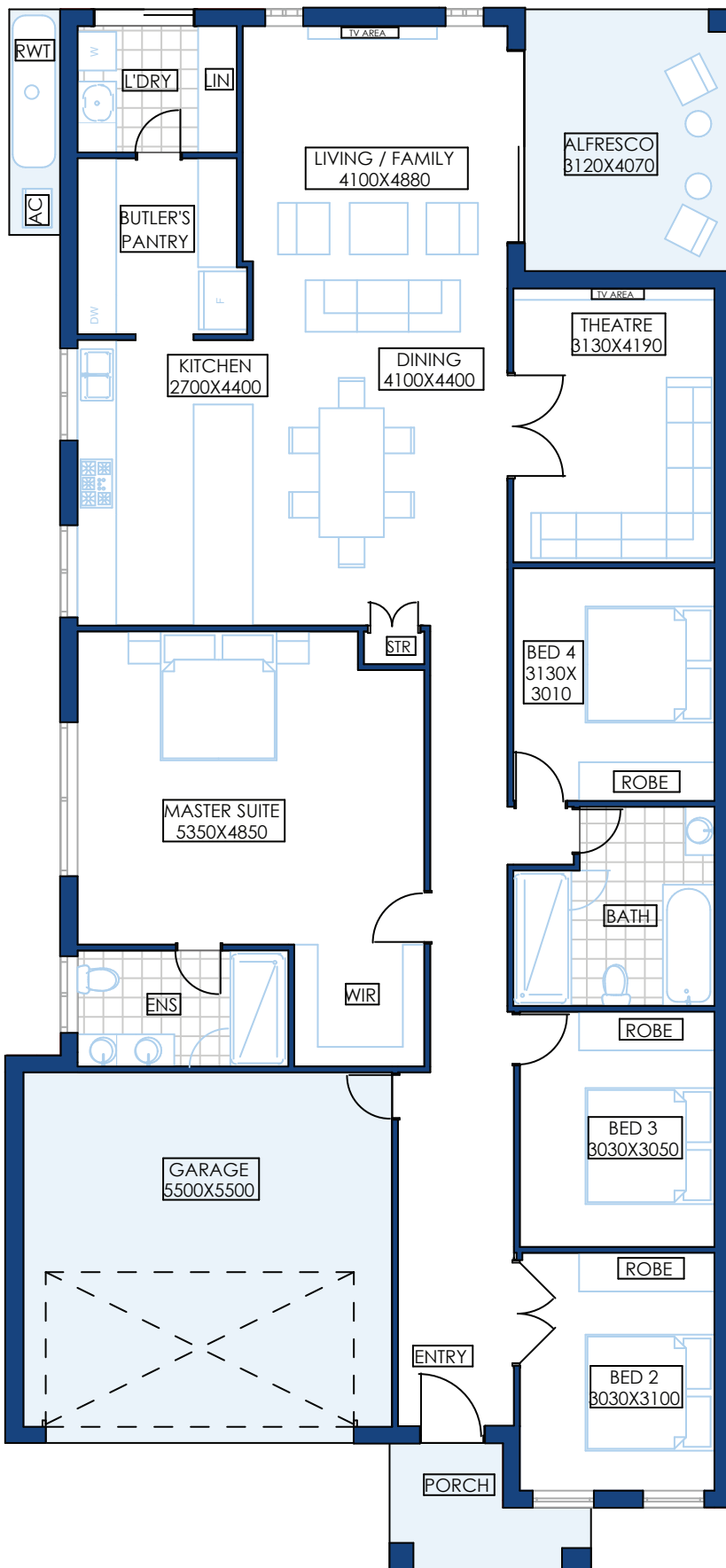
HIBISCUS

4 | 2 | 2 | 2

Hibiscus is the perfect home for a family with young kids wanting space for activities while also giving you a restful sleep.

The house is designed with a lounge at the front, to ensure privacy to your family room at the back. You will have spacious bedrooms with a large walk-in robe and an attached ensuite to the Master. The simple layout of Hibiscus, gives you the opportunity to customize your interiors as per your own likes.

With minimal walls inside, you will have more space for the things that really matter. An open living dining and alfresco give you plenty of space to entertain, while the bedrooms close to the master will ensure you and your kids are at close proximity in their own private spaces.



HIBISCUS

26

Ground floor	191.99 sqm
Porch	4.89 sqm
Alfresco	13.07 sqm
Garage	35.94 sqm

Hibiscus



ARTECH
HOMES
BUILDING A BETTER LIFE

P 02 9161 1010 | **E** info@artechhomes.com.au | **A** 7 Huntmore Rd Minto NSW 2566 | **W** artechhomes.com.au

ARTECH HOMES | A DIVISION OF MAJOR PROPERTY DEVELOPERS PTY LTD. | ABN: 90 601 427 141 | BUILDER LICENCE NO: 276490C