



FEATURES

Separate Lounge/Theatre in
Ground and first floor

Large WIP and Storage

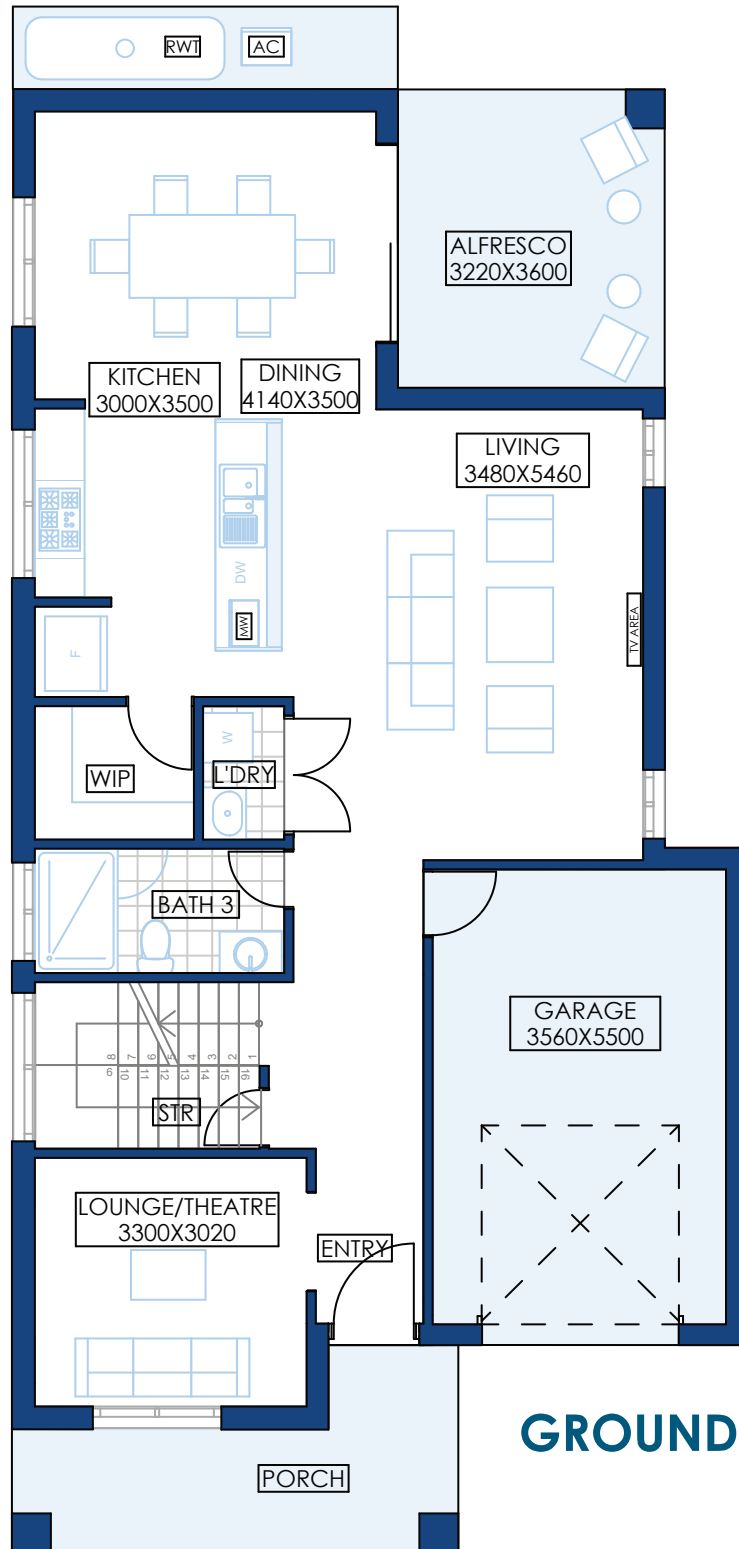
Open family dining and Alfresco

Lounge opening up to Balcony

4 | 3 | 3 | 1

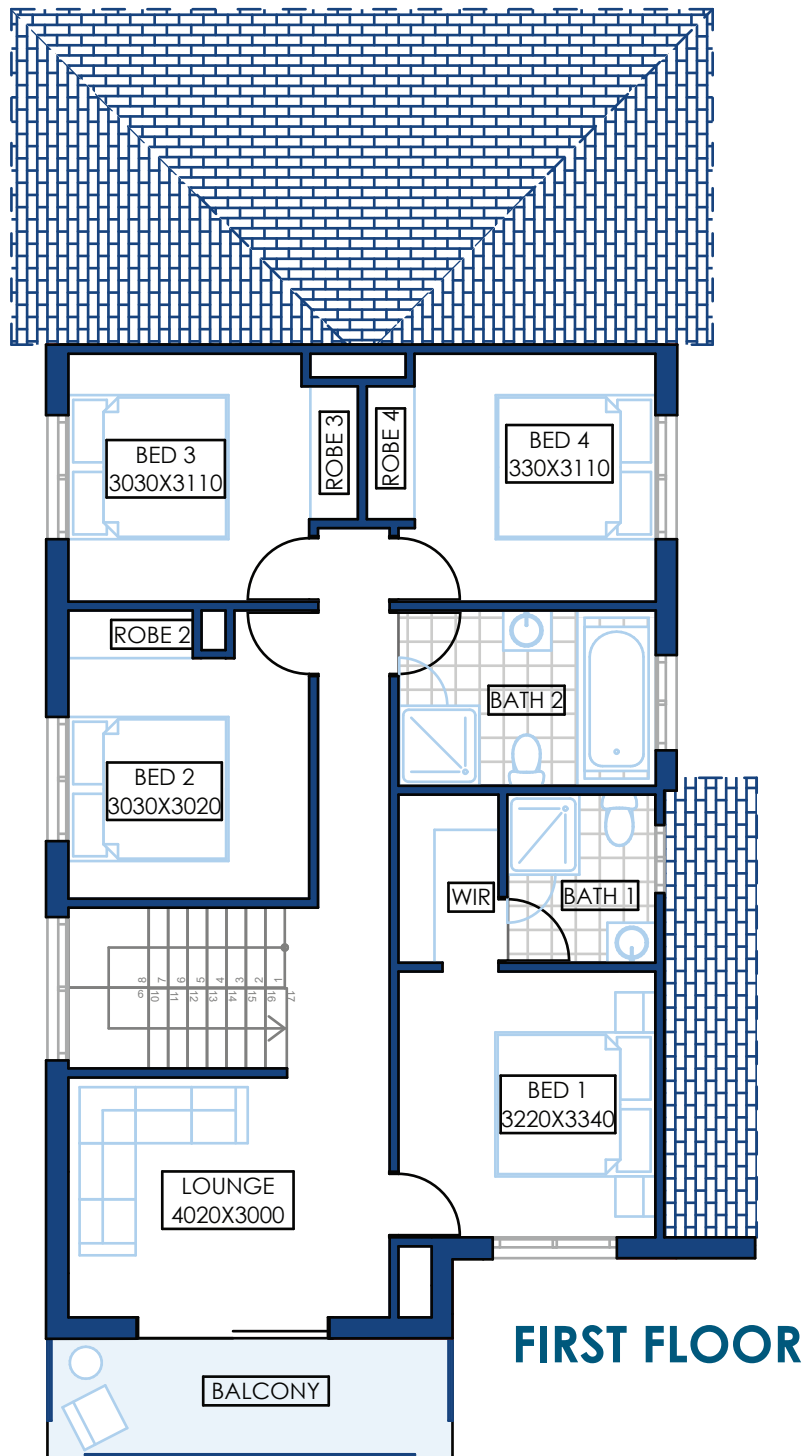
With your lifestyle in mind, we design your house to make use of as many natural elements as possible. With panoramic windows to each room, you will have plenty of natural light and cross ventilation. A Colorbond rainwater tank and the option of installing solar panels we will ensure you will be saving your money and the environment. All our houses go through compulsory BASIX checks to make sure your home remains both economical and ecological.

EUCALYPTUS



GROUND FLOOR

Suitable for smaller frontages, Eucalyptus is the epitome of efficient space utilised. All the entertaining spaces are placed downstairs while the private spaces are placed upstairs. All the bedrooms have easy accessibility to bathrooms, with the Master suite having a large WIR and ensuite. It offers a beautiful balcony along with a lounge upstairs.



Eucalyptus has 3 living areas with an open plan, large rooms, and dining. The front-facing patio and lounge make sure that the guests and host alike have an exciting streetscape view. With a designated laundry space and spacious bathrooms, Eucalyptus is as functional as it is beautiful.

The compact Eucalyptus is the perfect home for growing families, looking for a house that has a space for everyone.

EUCALYPTUS 25

Ground floor	94.56 sqm
First floor	88.18 sqm
Porch	9.58 sqm
Alfresco	11.54 sqm
Garage	22.7 sqm
Patio	7.57 sqm

Eucalyptus



ARTECH
HOMES
BUILDING A BETTER LIFE

P 02 9161 1010 | **E** info@artechhomes.com.au | **A** 7 Huntmore Rd Minto NSW 2566 | **W** artechhomes.com.au

ARTECH HOMES | A DIVISION OF MAJOR PROPERTY DEVELOPERS PTY LTD. | ABN: 90 601 427 141 | BUILDER LICENCE NO: 276490C