



## FEATURES

Bedroom in the front with beautiful views

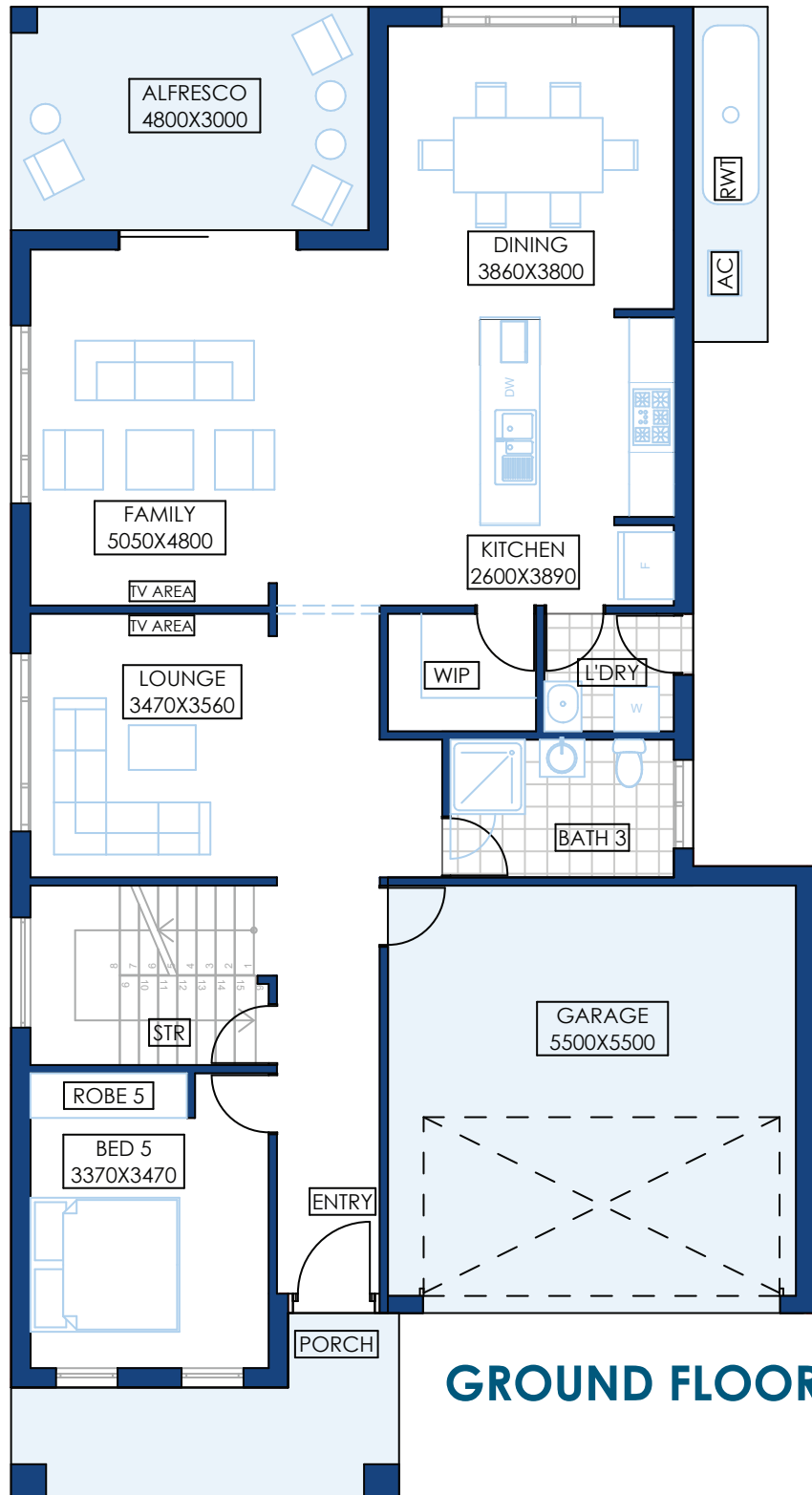
Open family dining and Alfresco  
5 large bedrooms

His & Her WIR in a large master

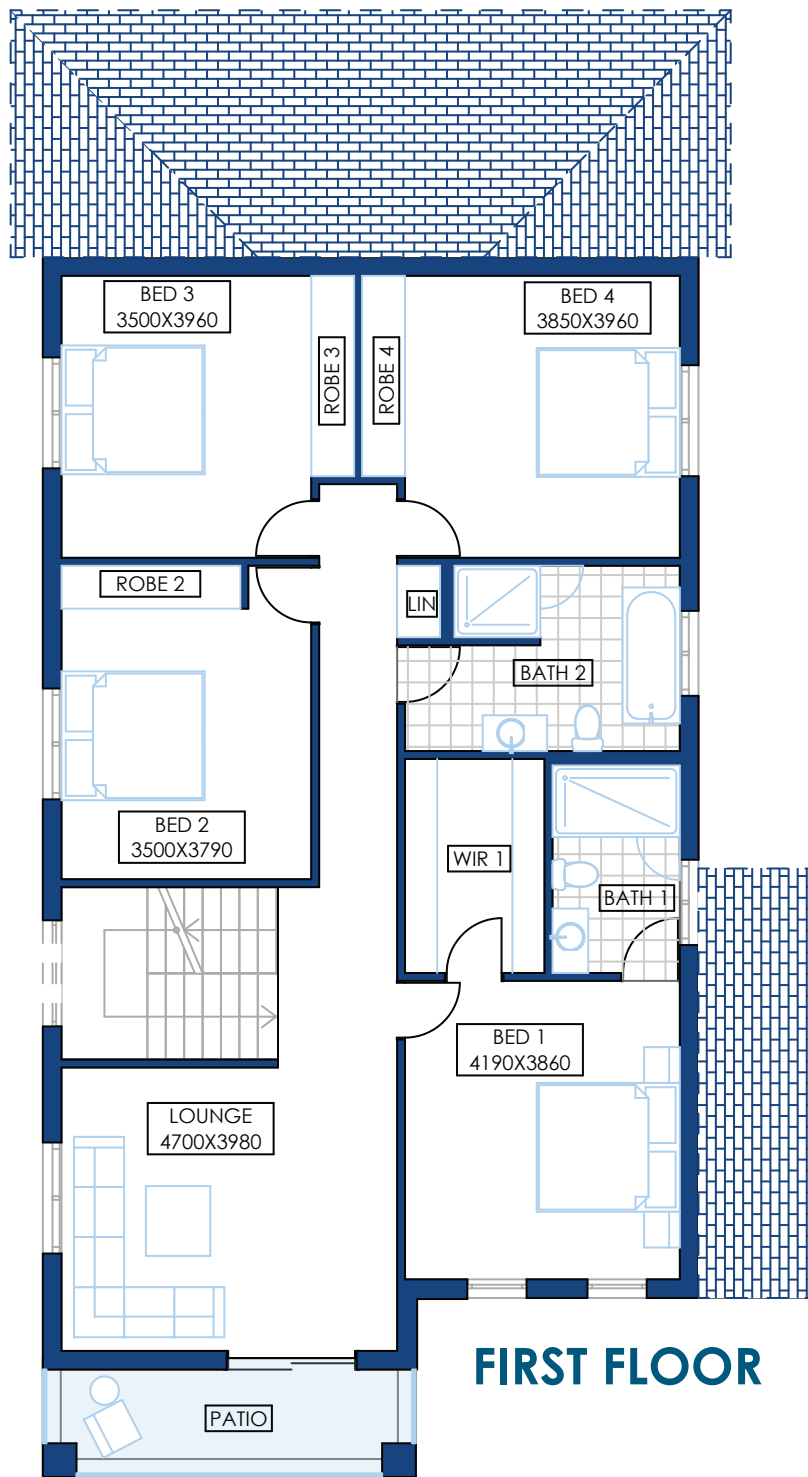
5 | 3 | 3 | 2

With your lifestyle in mind, we design your house to make use of as many natural elements as possible. With panoramic windows to each room, you will have plenty of natural light and cross ventilation. A Colorbond rainwater tank and the option of installing solar panels we will ensure you will be saving your money and the environment. All our houses go through compulsory BASIX checks to make sure your home remains both economical and ecological.

# WATERGUM



Watergum is a fantastic double storey home for the entertaining family. This floor plan features a large alfresco and separate living and dining spaces to ensure you can entertain to your full potential. It also includes 5 large bedrooms, with a large master suite and, a huge WIR and ensuite.



## FIRST FLOOR

The street facing patio and front living area will ensure that you and your guests will always have the best streetscape view. The home features a lot of storage options; a large WIP, WIL and storage under the stairs. This will ensure that you always have enough space for you and your guests.

## WATERGUM

34

Ground floor	126.46 sqm
First floor	131.11 sqm
Porch	6.91 sqm
Alfresco	14.4 sqm
Garage	33.37 sqm
Patio	5.42 sqm

# Watergum



**ARTECH**  
HOMES  
BUILDING A BETTER LIFE

---

**p** 02 9161 1010 | **e** [info@artechhomes.com.au](mailto:info@artechhomes.com.au) | **a** 7 Huntmore Rd Minto NSW 2566 | **w** [artechhomes.com.au](http://artechhomes.com.au)

ARTECH HOMES | A DIVISION OF MAJOR PROPERTY DEVELOPERS PTY LTD. | ABN: 90 601 427 141 | BUILDER LICENCE NO: 276490C