



FEATURES

Separate Lounge in Ground and First floor

5 large bedrooms

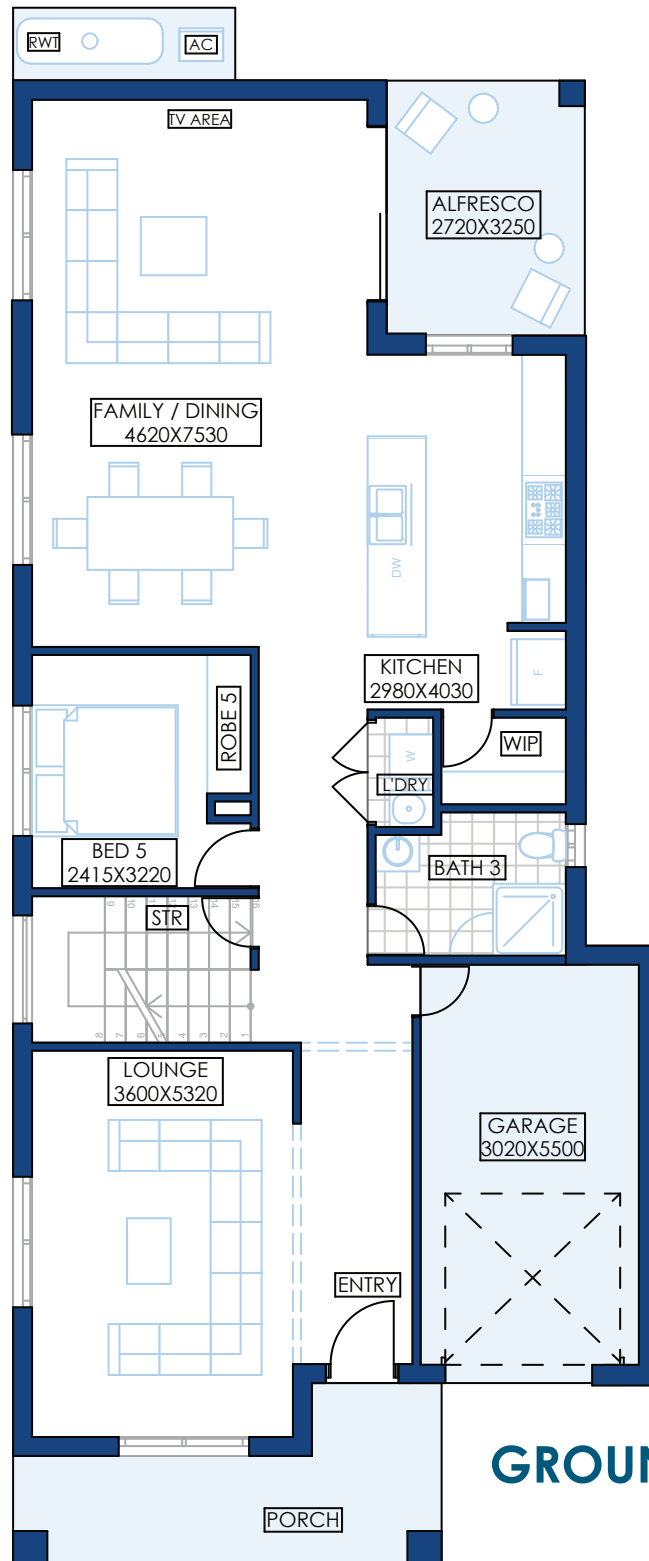
Open family dining and Alfresco

Linen and storage space

5 | 3 | 3 | 1

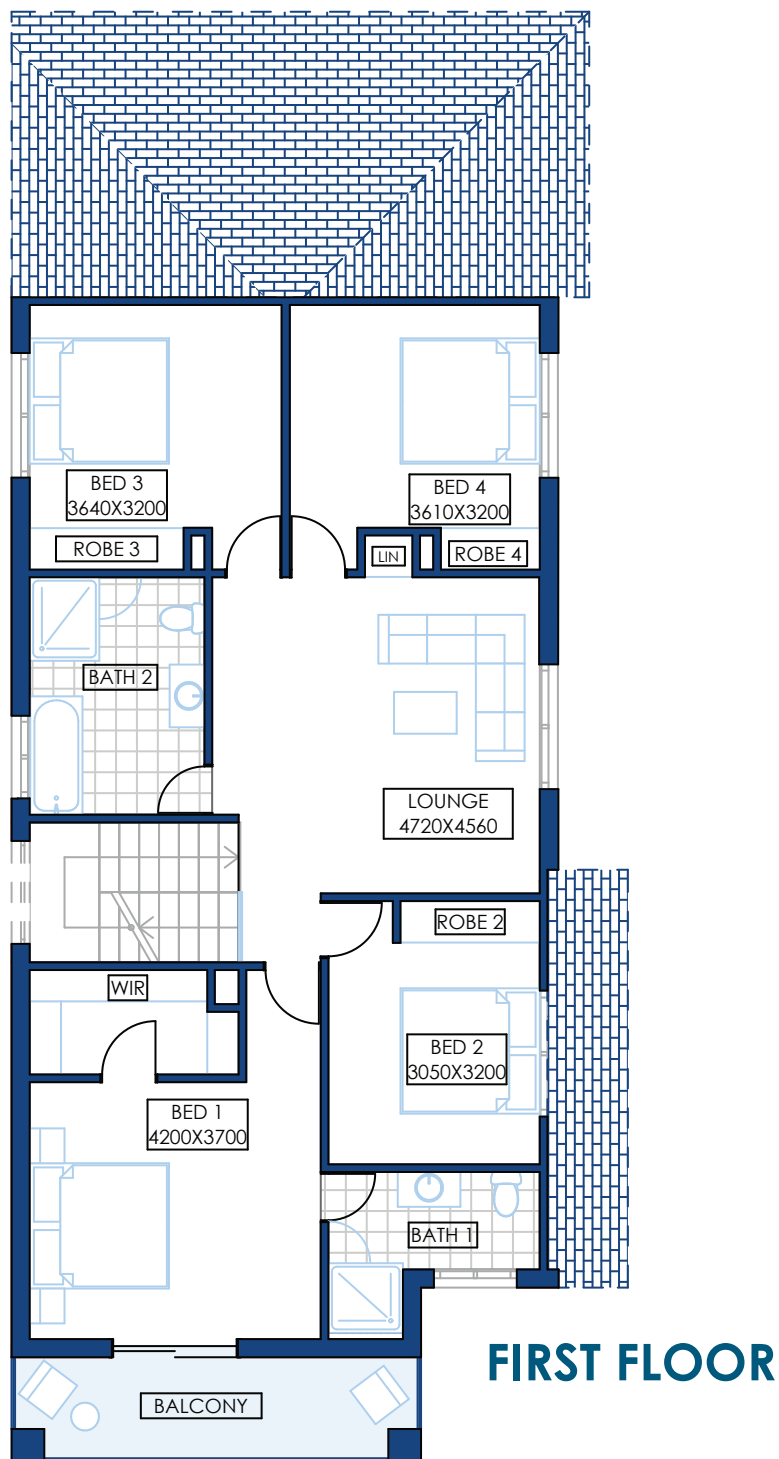
With your lifestyle in mind, we design your house to make use of as many natural elements as possible. With panoramic windows to each room, you will have plenty of natural light and cross ventilation. A Colorbond rainwater tank and the option of installing solar panels we will ensure you will be saving your money and the environment. All our houses go through compulsory BASIX checks to make sure your home remains both economical and ecological.

WATTLE



GROUND FLOOR

Wattle is the epitome of efficient space utilised. All the entertaining spaces along with the guest bed are placed downstairs while the private spaces are placed upstairs. All the bedrooms have easy accessibility to bathrooms, with the Master suite having a large WIR and ensuite. It offers a beautiful balcony along with a lounge upstairs.



Wattle has 3 living areas with an open plan, large rooms, and dining. The front-facing patio and lounge make sure that the guests and host alike have an exciting streetscape view. With a designated laundry space and spacious bathrooms, waattle is as functional as it is beautiful.

The compact wattle is the perfect home for growing families, looking for a house that has a space for everyone.

WATTLE

30

Ground floor	121.29 sqm
First floor	110.88 sqm
Porch	10.56 sqm
Alfresco	9.52 sqm
Garage	20.33 sqm
Patio	8.82 sqm

Wattle



ARTECH
HOMES
BUILDING A BETTER LIFE

p 02 9161 1010 | **e** info@artechhomes.com.au | **a** 7 Huntmore Rd Minto NSW 2566 | **w** artechhomes.com.au

ARTECH HOMES | A DIVISION OF MAJOR PROPERTY DEVELOPERS PTY LTD. | ABN: 90 601 427 141 | BUILDER LICENCE NO: 276490C