





FEATURES

- 4 Large bedrooms
- Open living space
- Private Master Bedroom
- Bathroom with separate W/C

 4 |
  2 |
  2 |
  2

With your lifestyle in mind, we design your house to make use of as many natural elements as possible. With panoramic windows to each room, you will have plenty of natural light and cross ventilation. A Colorbond rainwater tank and the option of installing solar panels we will ensure you will be saving your money and the environment. All our houses go through compulsory BASIX checks to make sure your home remains both economical and ecological.

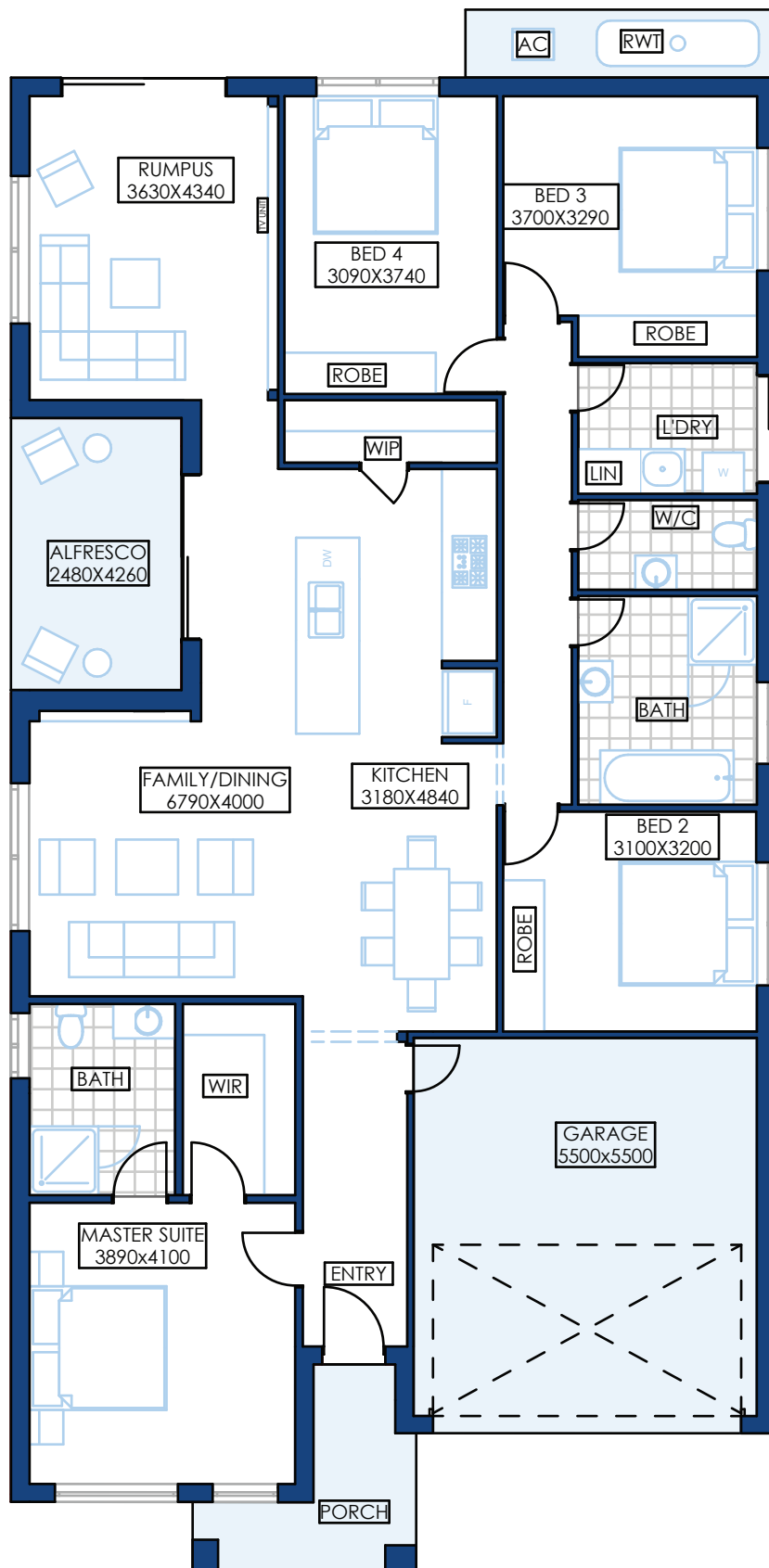
BANKSIA



Suitable for the growing modern family, Banksia is the perfect contemporary home for loud entertainers and introverts alike. With something for everyone, this home will surely meet all your needs.

Banksia is the epitome of open plan living, with a kitchen opening up to the dining/living and a private alfresco at the back. You will have a perfect view of the streetscape from your master bedroom, and the large double garage also acts as a perfect storage solution.

Banksia provides the perfect privacy for a growing family. With large hidden bedrooms, versatile entertainment areas, a bathroom with a separate toilet for ease of access, and an attached walk-in robe and ensuite to your master bedroom, your family can grow comfortably and adapt smoothly into this home



BANKSIA

25

Ground floor	165.75 sqm
Porch	6.15 sqm
Alfresco	10.00 sqm
Garage	27.45 sqm

Banksia



ARTECH
HOMES
BUILDING A BETTER LIFE

P 02 9161 1010 | **E** info@artechhomes.com.au | **A** 7 Huntmore Rd Minto NSW 2566 | **W** artechhomes.com.au

ARTECH HOMES | A DIVISION OF MAJOR PROPERTY DEVELOPERS PTY LTD. | ABN: 90 601 427 141 | BUILDER LICENCE NO: 276490C