







FEATURES

Private Master Bedroom with large WIR and Ensuite

Open Living Design

Large Bedrooms near main bathroom

Huge WIP

 4 |
  2 |
  2 |
  2

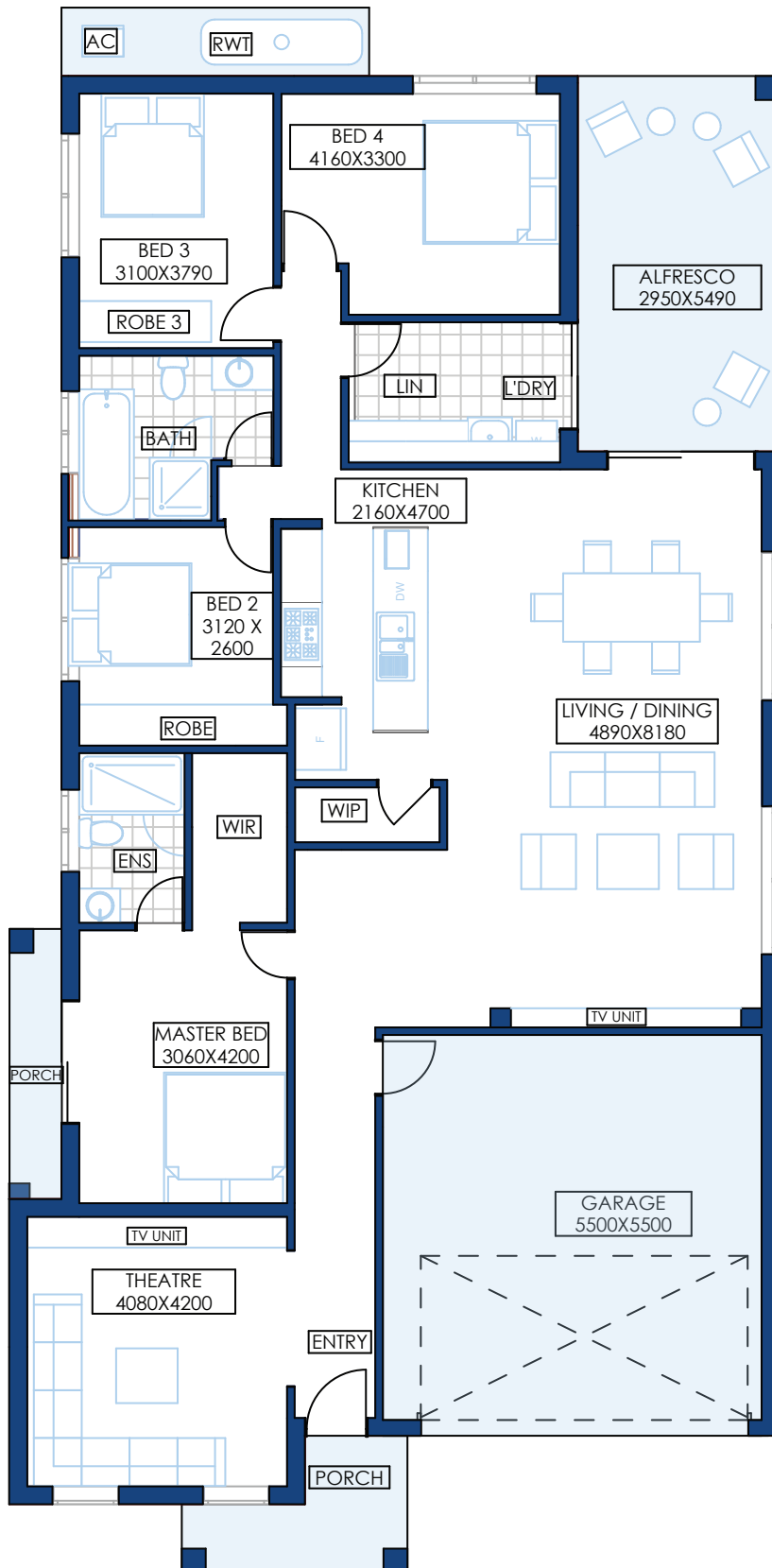
With your lifestyle in mind, we design your house to make use of as many natural elements as possible. With panoramic windows to each room, you will have plenty of natural light and cross ventilation. A Colorbond rainwater tank and the option of installing solar panels we will ensure you will be saving your money and the environment. All our houses go through compulsory BASIX checks to make sure your home remains both economical and ecological.

REDGUM

4 | 2 | 2 | 2

Dynamically designed Red Gum is a balanced home featuring 4 large bedrooms, an extra space that can be used as a theater/ media room, an open living and a Double Garage. It is designed for a modern family wishing to grow, this house also provides the perfect privacy for all members of the family.

With a centralized kitchen opening to the family and dining and a spacious alfresco, entertaining has never been easier. This perfectly articulated plan gives plenty of natural light and cross-ventilation throughout the house. This design has accommodated huge storage in different forms such as walk in pantry, Linen etc. The spacious Master Suite consists of a large WIR and Ensuite along with a fantastic street facing view. Redgum consists of a variation with a private deck outside Master suite to provide privacy. Red Gum is the perfect home for those who enjoy family time, whilst still having their own space.



REDGUM

26

Ground floor 188.29 sqm

Porch 5.23 sqm

Alfresco 14.79 sqm

Garage 33.57 sqm

Redgum



ARTECH
HOMES
BUILDING A BETTER LIFE

P 02 9161 1010 | **E** info@artechhomes.com.au | **A** 7 Huntmore Rd Minto NSW 2566 | **W** artechhomes.com.au

ARTECH HOMES | A DIVISION OF MAJOR PROPERTY DEVELOPERS PTY LTD. | ABN: 90 601 427 141 | BUILDER LICENCE NO: 276490C