







FEATURES

Private study nook
4 large bedrooms
Large WIR in the Master
Extra rumpus in the first floor
Open family and dining

 4 |  2.5 |  2 |  2

With your lifestyle in mind, we design your house to make use of as many natural elements as possible. With panoramic windows to each room, you will have plenty of natural light and cross ventilation. A Colorbond rainwater tank and the option of installing solar panels we will ensure you will be saving your money and the environment. All our houses go through compulsory BASIX checks to make sure your home remains both economical and ecological.

TEAK



4



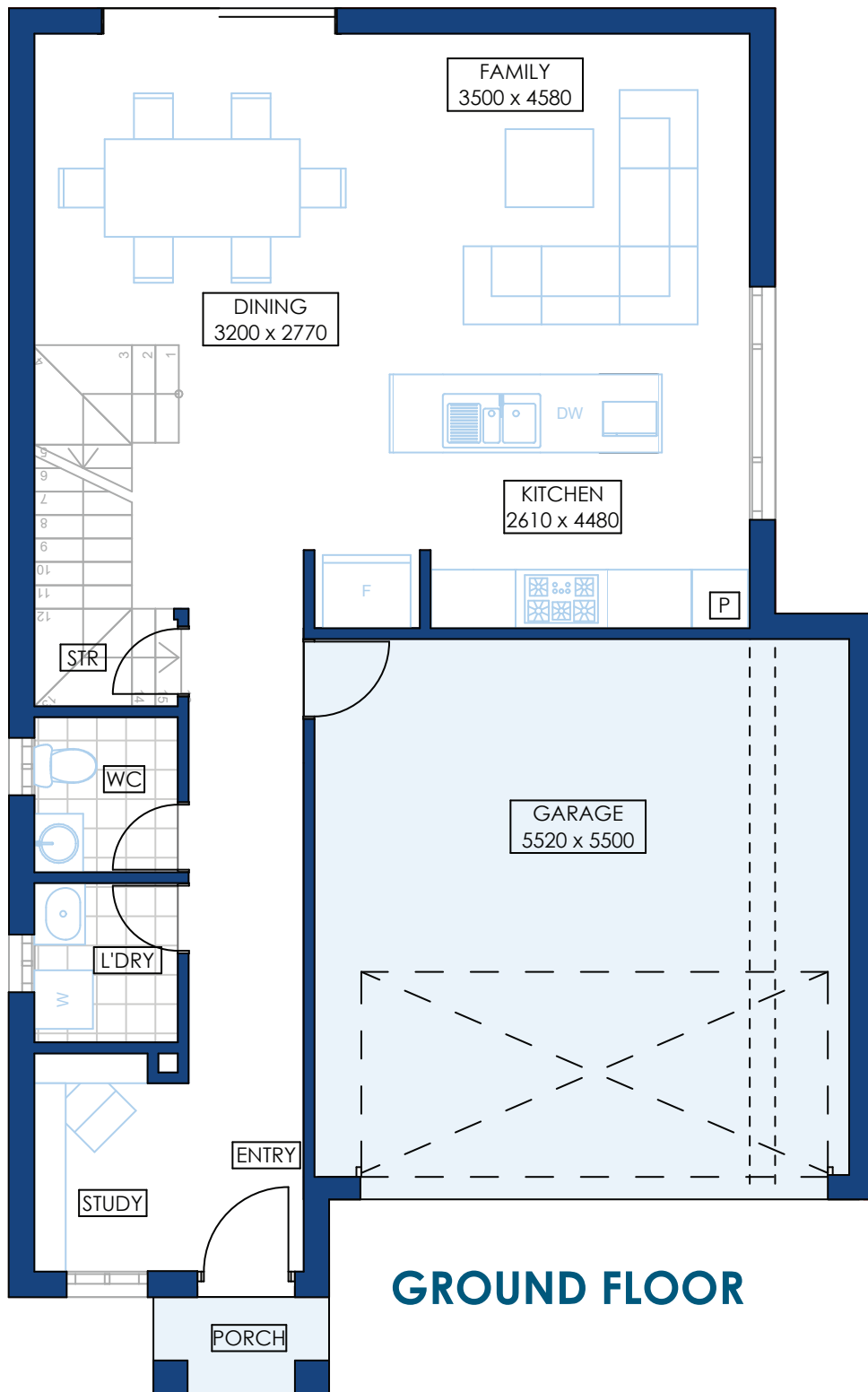
2.5



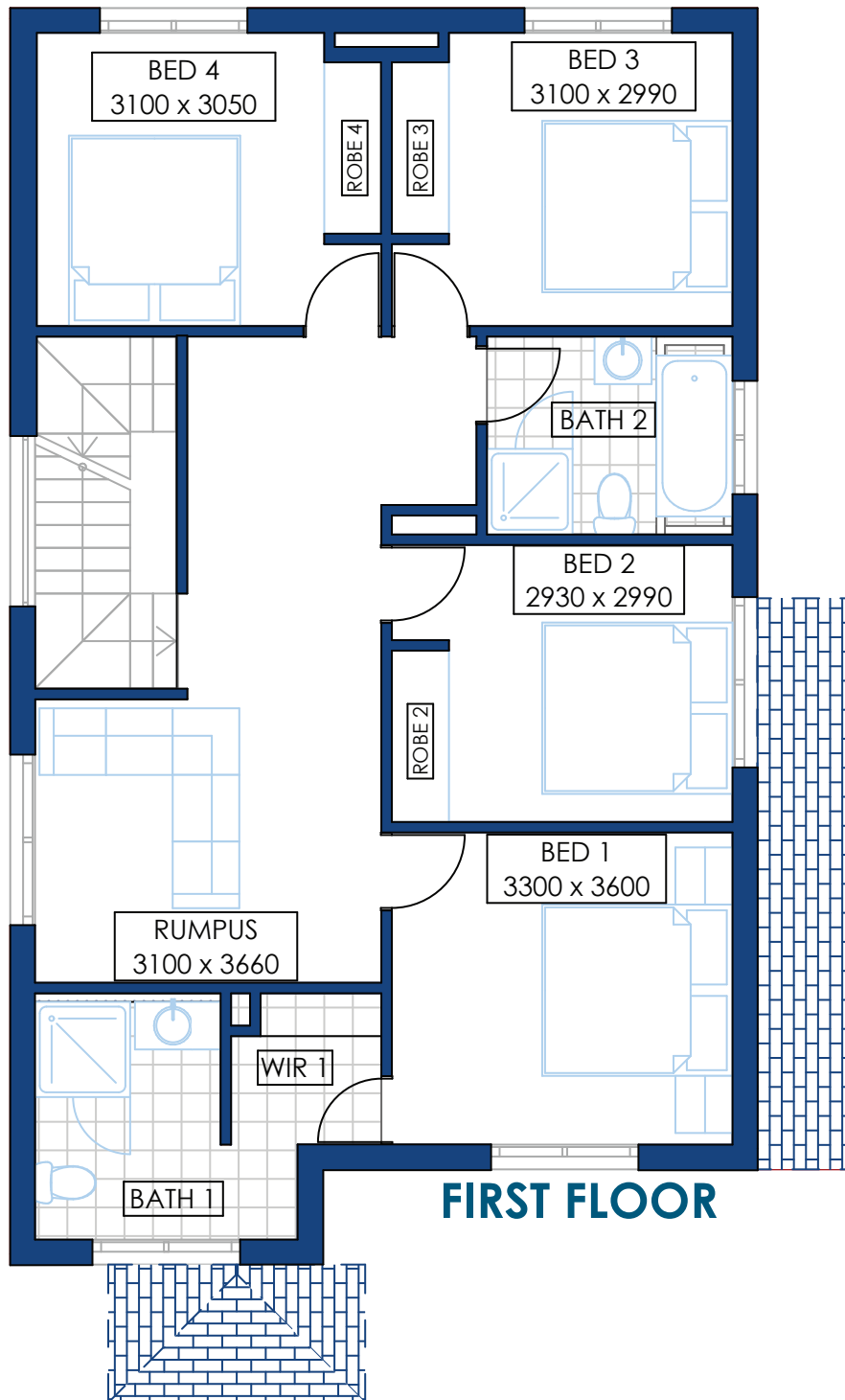
2



2



Ideal for narrow frontages, Teak is a 4 bedroom home with the master bedroom having stunning views. It has plenty of storage spaces including big robes and storage under the stairs.



The large windows are the highlight of this home, making a special retreat to look at the streetscape from the master bedroom. The master is equipped with a huge ensuite and a large WIR to match.

Teak is a versatile home for any family looking for privacy and entertainment together.

TEAK		21
Ground floor	70.8 sqm	
First floor	92.6 sqm	
Porch	1.8 sqm	
Garage	34.38 sqm	

Teak



ARTECH
HOMES
BUILDING A BETTER LIFE

p 02 9161 1010 | **e** info@artechhomes.com.au | **a** 7 Huntmore Rd Minto NSW 2566 | **w** artechhomes.com.au

ARTECH HOMES | A DIVISION OF MAJOR PROPERTY DEVELOPERS PTY LTD. | ABN: 90 601 427 141 | BUILDER LICENCE NO: 276490C